



Chamber SimplySign CA Certificate Chain Installation Guide

T-TSUP-AMJ-015

Copyright © Trustis Limited 2012. All rights reserved.

Trustis Limited

Building 273 Greenham Business Park Greenham Common Thatcham RG19 6HN

E: info@trustis.com W: www.trustis.com

Registered in England No: 03613613



Introduction

The SimplySign service provides digital certificates which are used to authenticate users of various Government Gateway services. During your application process for a SimplySign certificate, you are required to submit personal information to enable your identity to be verified. This personal information is protected by an encrypted connection between your browser and the SimplySign server which uses a digital certificate installed on the SimplySign server. In order for you to trust the SimplySign service's server certificate, it may be necessary for you to install what is known as the **CA Chain** - this is a file containing the **Trustis FPS Root CA** certificate and the **Chamber SimplySign TT Issuing Authority** certificate. This document describes how to install the CA chain in order to obtain your user certificates.

The document covers the currently supported browsers:

- I. CA certificate chain installation with Windows XP and Microsoft Internet Explorer 6 (MSIE6)
- II. CA certificate chain installation with Windows Vista and Microsoft Internet Explorer 7 (MSIE7)
- III. CA certificate chain installation with Windows 7 and Microsoft Internet Explorer 8 (MSIE8) or 9 (MSIE9)
- IV. CA certificate chain installation with Firefox

Before applying for a SimplySign certificate of your own, you should download and install the CA certificate chain as described below according to your Operating System/web browser combination. If you have a different combination of Operating System and browser, go to the section relevant to your Operating System, and then refer to the NOTE part at the beginning of the section which will detail what to do.

I. CA Chain Installation with Windows XP and MSIE6

NOTE

The process was captured using Internet Explorer 6. If you are using Internet Explorer 7, 8 or 9, the process is very similar. However, please refer to Section II if you are using Internet Explorer 7, Section III if you are using Internet Explorer 8, or Section IV if you are using Internet Explorer 9.

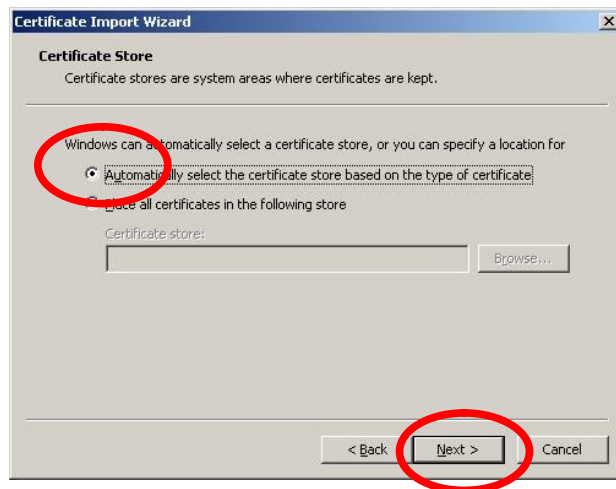
If you are using Firefox, please refer to Section IV.

1. To obtain the CA Chain file, please browse to <http://www.simplysign.co.uk/downloads/cachain.p7b> and save the file somewhere convenient, such as on your PC desktop.
2. When the file is downloaded, right-click on the file and select **Install Certificate**.

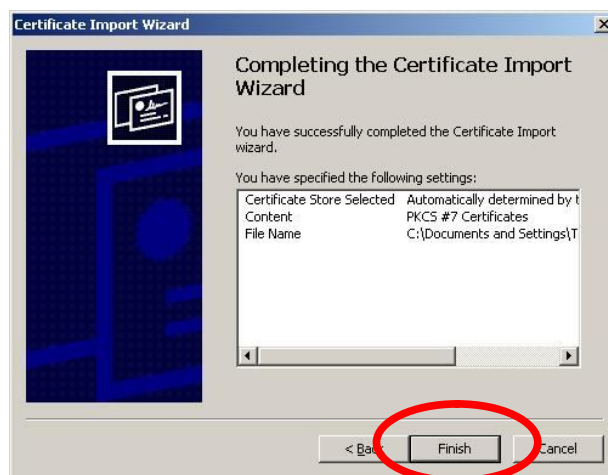


3. The **Certificate Import Wizard** appears; press **Next**.

4. Keep the default option and press **Next**.



5. Click Finish



6. Depending on whether you already have the Trustis FPS Root CA installed, you may also see the following message:



7. If you do see this message, click **Yes** to install the Root Certificate.
8. Click **OK** to complete the installation:



9. Confirm installation of the certificates by opening MSIE6 and selecting **Tools -> Internet Options -> Content** tab -> **Certificates**. The CA certificate called *Trustis FPS Root CA* should be installed in the **Trusted Root Certification Authorities** tab, and the Issuing Authority certificate called *Chamber SimplySign TT Issuing Authority* should be installed in the **Intermediate Certification Authorities** tab.

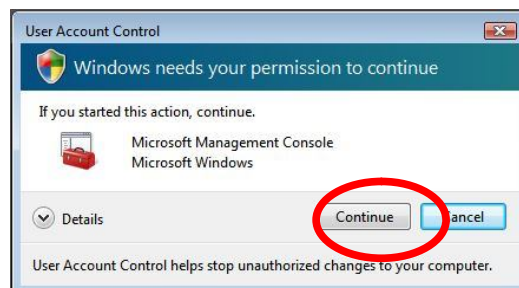
II. CA Chain Installation with Windows Vista and MSIE7

NOTE

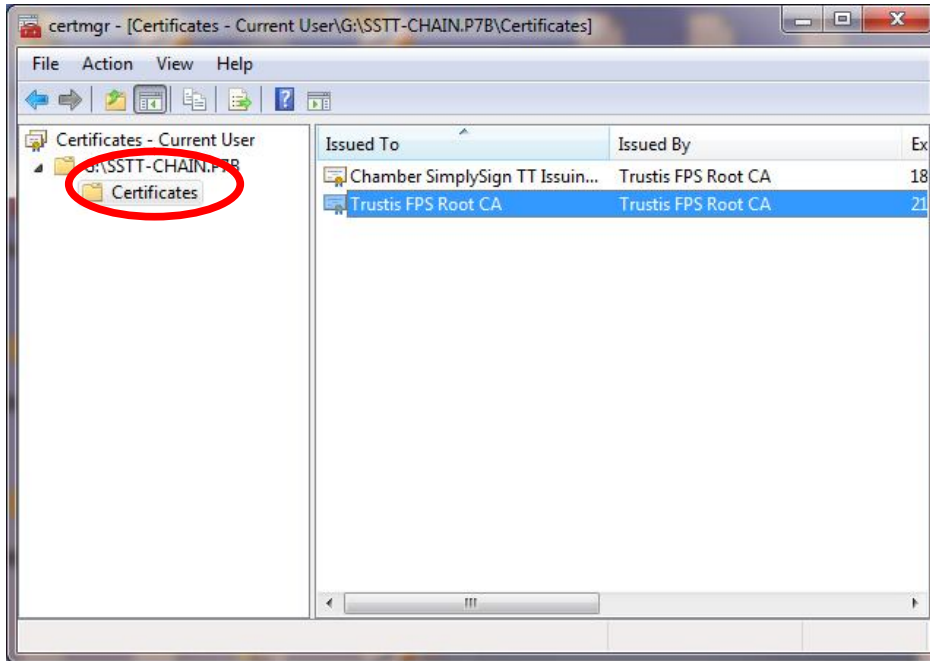
The process was captured using Internet Explorer 7. If you are using Internet Explorer 8, the process will be very similar. However, please refer to Section III if you are using Internet Explorer 8, or Section IV if you are using Internet Explorer 9.

If you are using Firefox, please refer to Section IV.

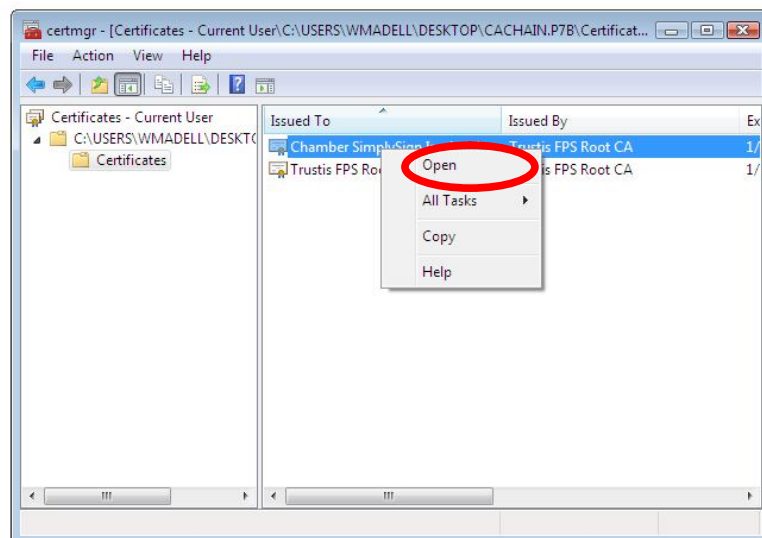
1. To obtain the CA Chain file, please browse to <http://www.simplysign.co.uk/downloads/cachain.p7b> and save the file somewhere convenient, such as on your PC desktop.
2. When the file is downloaded, right-click on the file and select **Open**. At this point, if you have 'User Account Control' active, you will see the following dialogue box. Click **Continue**.



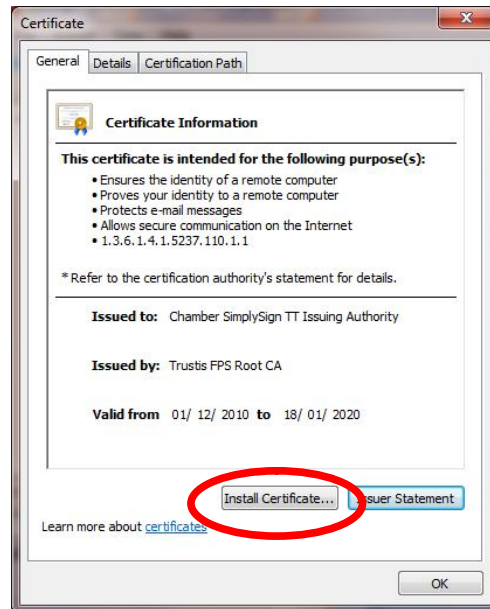
3. The **Certificate Manager** window appears; expand the folder on the left and click on the **Certificates** folder to show the two certificates on the right.



4. Right-click on the Chamber SimplySign TT Issuing Authority and choose Open.

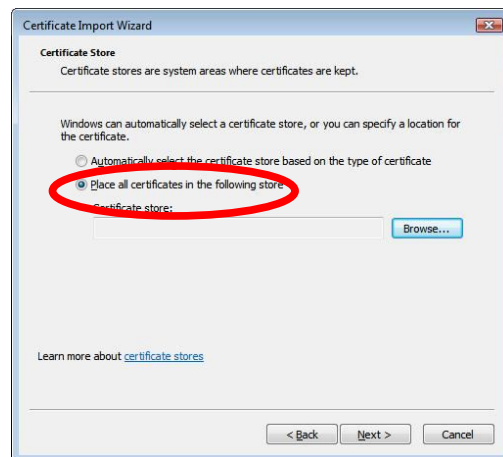


5. The Certificate window appears. Click **Install Certificate**.

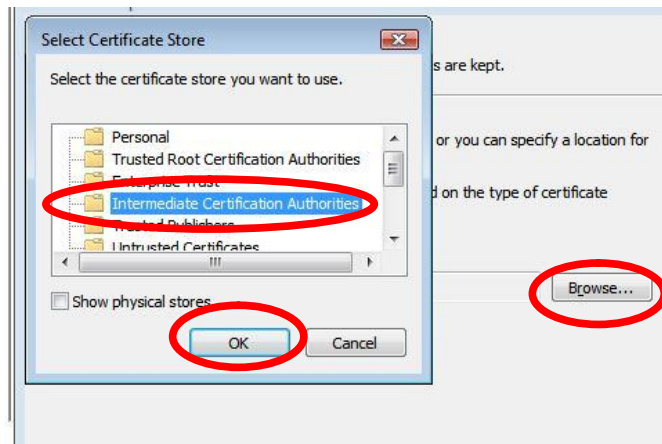


6. The **Certificate Import Wizard** appears. Click **Next**.

7. Click the option **Place all certificates in the following store**.



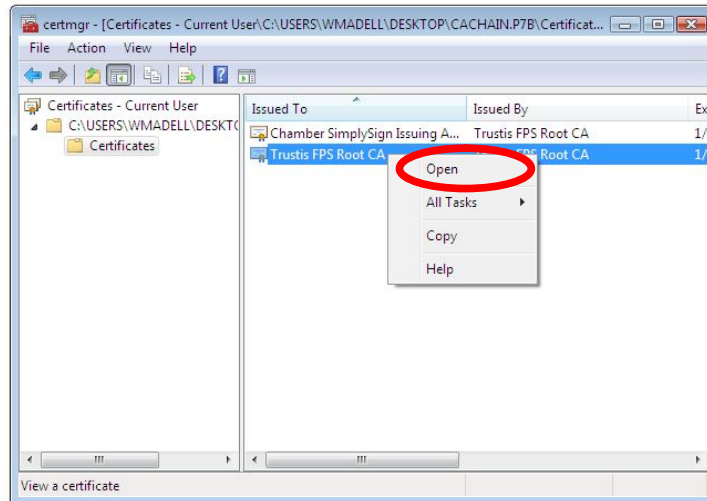
8. Click **Browse**, choose **Intermediate Certification Authorities** and then click **OK**



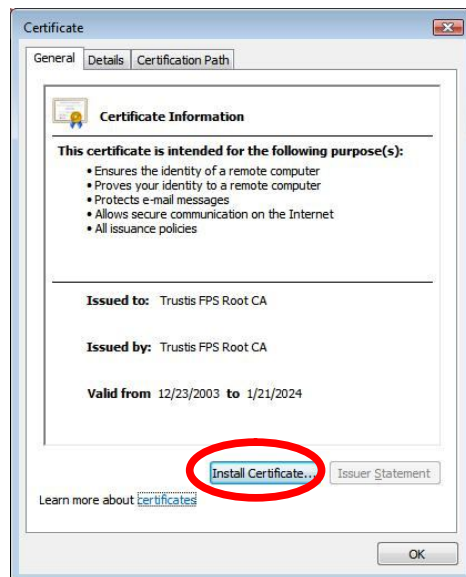
9. Click **Next**, then **Finish**. A dialogue box will appear, stating that the import was successful. Click **OK** to complete the certificate import process.



10. Close the Certificate window shown in point 5 by clicking **OK**. Now go back to the Certificate Manager window to repeat the process for the other certificate. Right-click on the **Trustis FPS Root CA**. Click **Open**.

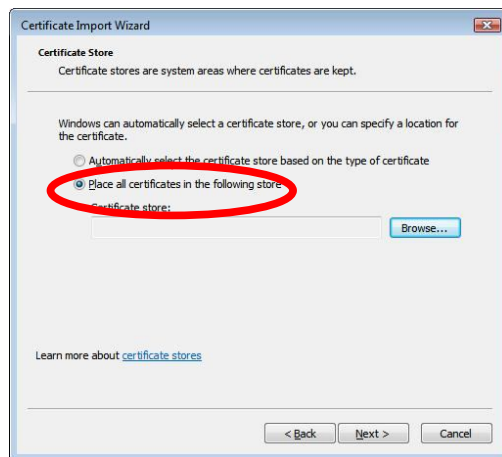


11. The Certificate window appears. Click **Install Certificate**.

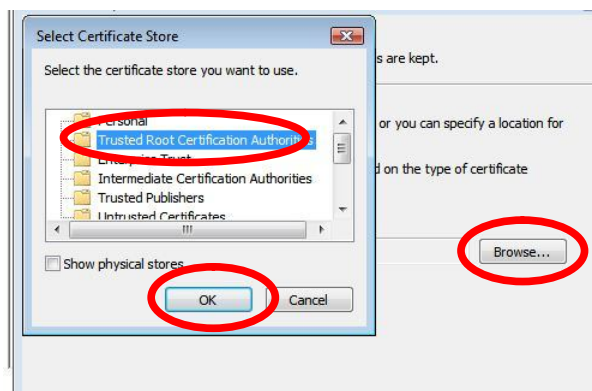


12. The **Certificate Import Wizard** appears. Click **Next**.

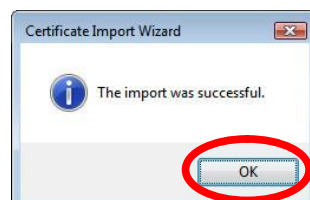
13. Click the option **Place all certificates in the following store.**



14. Click **Browse**, choose **Trusted Root Certification Authorities** and then click **OK**



15. Click **Next**, then **Finish**. A dialogue box will appear, stating that the import was successful. Click **OK** to complete the certificate import process.



16. Close the Certificate window shown in point 5 by clicking **OK**.
17. Confirm installation of the certificates by opening MSIE7 and selecting **Tools -> Internet Options -> Content** tab -> **Certificates**.
18. The CA certificate called *Trustis FPS Root CA* should be installed in the **Trusted Root Certification Authorities** tab, and the Issuing Authority certificate called *Chamber SimplySign TT Issuing Authority* should be installed in the **Intermediate Certification Authorities** tab.

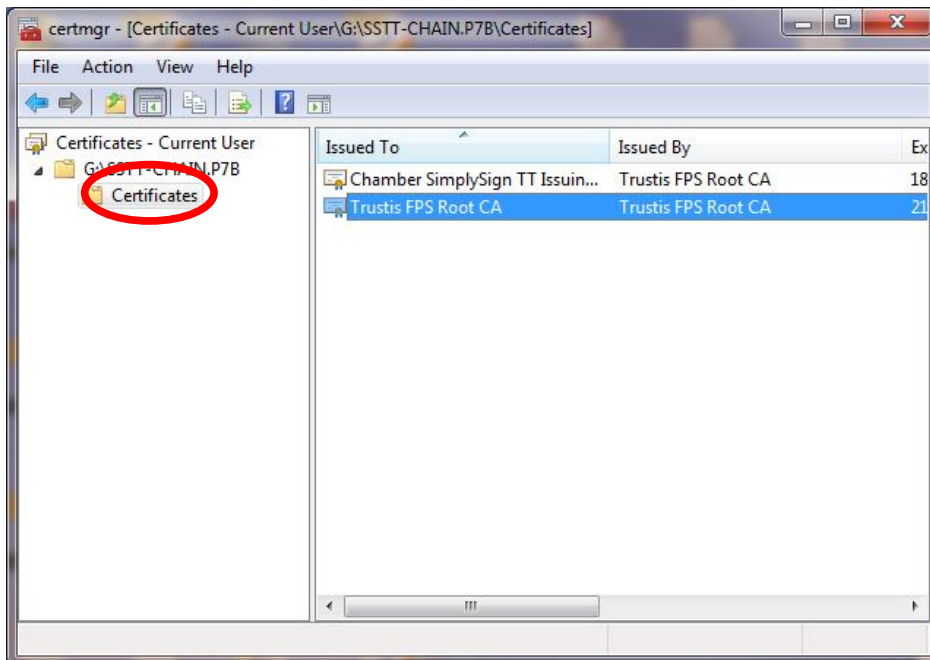
III. CA Chain Installation with Windows 7 and MSIE8 or MSIE9

NOTE

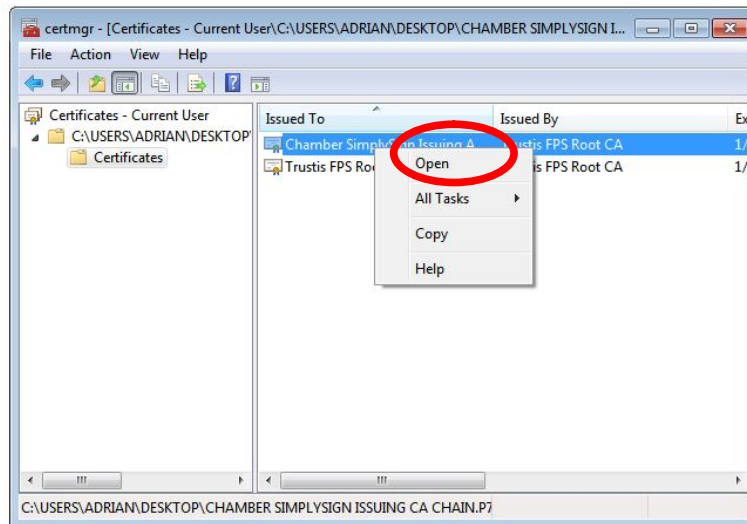
The process is captured using Internet Explorer 8. However, please refer to Section IV if you are using Internet Explorer 9.

If you are using Firefox, please refer to Section IV.

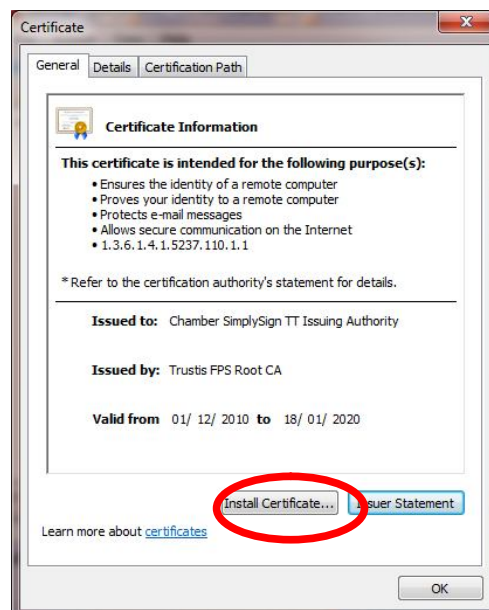
1. To obtain the CA Chain file, please browse to <http://www.simplysign.co.uk/downloads/cachain.p7b> and save the file somewhere convenient, such as on your PC desktop.
2. After download, right-click on the file and select **Open**. The **Certificate Manager** window appears; expand the folder on the left and click on the **Certificates** folder to show the two certificates on the right.



3. Right-click on the Chamber SimplySign TT Issuing Authority certificate and choose **Open**.

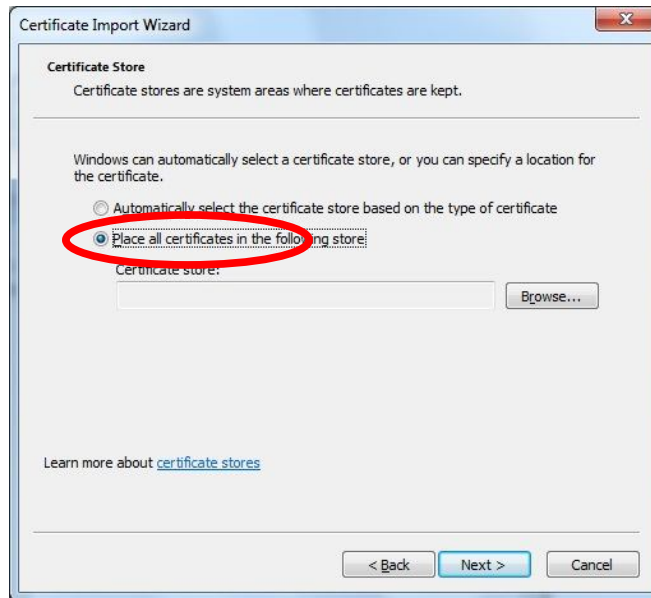


4. The Certificate window appears. Click **Install Certificate**.

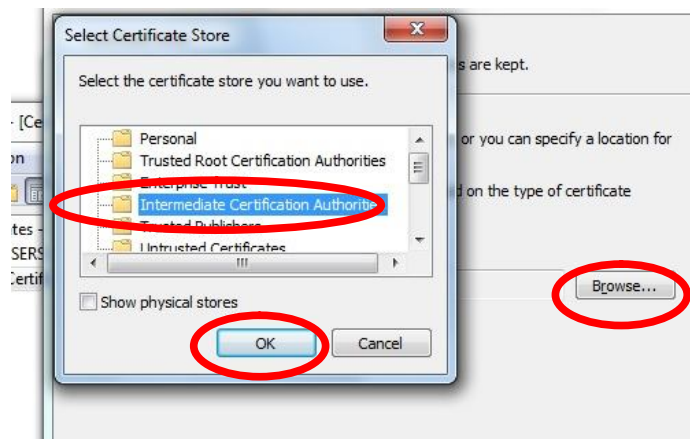


5. The **Certificate Import Wizard** appears. Click **Next**.

6. Click the option **Place all certificates in the following store**.



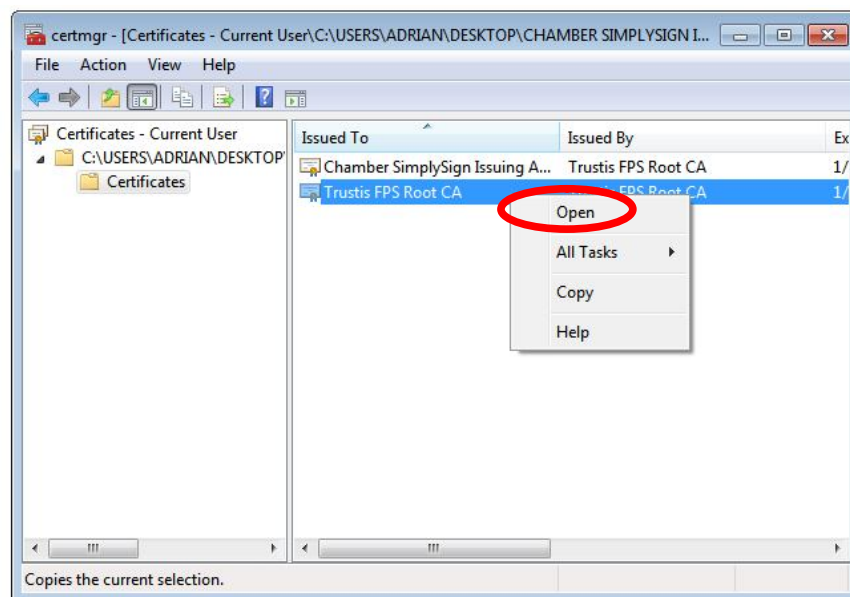
7. Click **Browse**, choose **Intermediate Certification Authorities** and then click **OK**



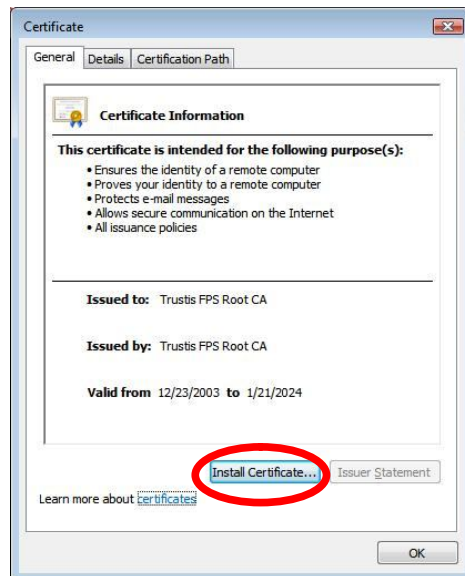
- Click **Next**, then **Finish**. A dialogue box will appear, stating that the import was successful. Click **OK** to complete the certificate import process.



- Close the Certificate window shown in point 4 by clicking **OK**. Now go back to the Certificate Manager window to repeat the process for the other certificate. Right-click on the **Trustis FPS Root CA**. Click **Open**.

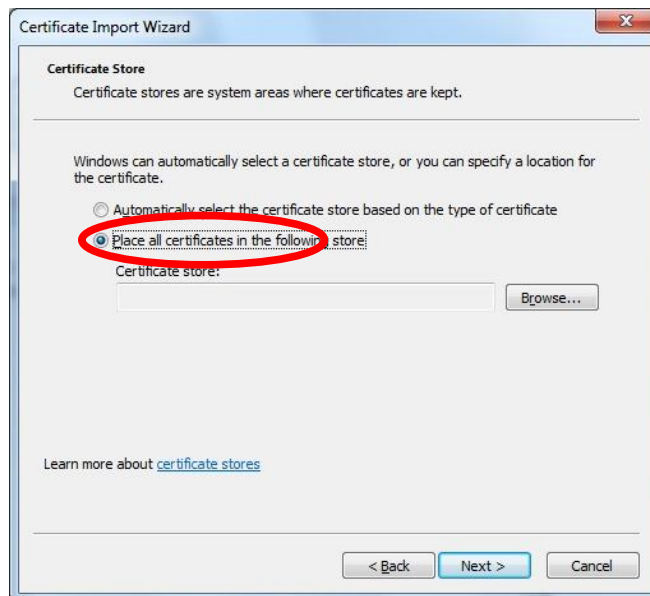


10. The Certificate window appears. Click **Install Certificate**.

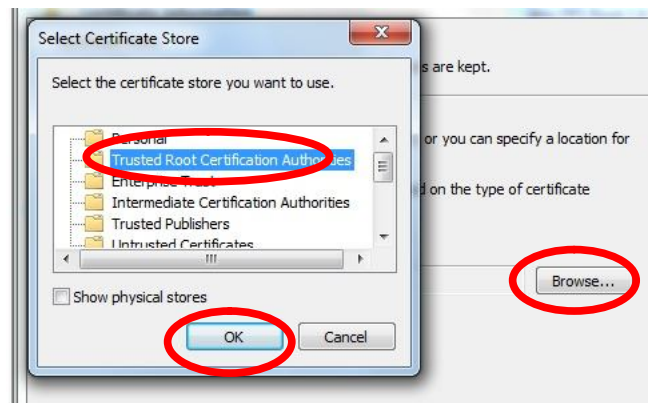


11. The **Certificate Import Wizard** appears. Click **Next**.

12. Click the option **Place all certificates in the following store**.



13. Click **Browse**, choose **Trusted Root Certification Authorities** and then click **OK**



14. Click **Next**, then **Finish**. A dialogue box will appear, stating that the import was successful. Click **OK** to complete the certificate import process.

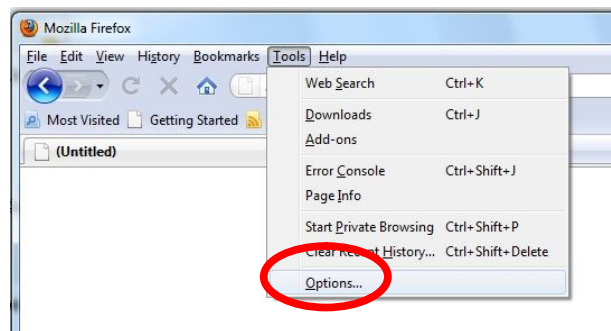


15. Close the Certificate window shown in point 4 by clicking **OK**.
16. Confirm installation of the certificates by opening MSIE7 and selecting **Tools -> Internet Options -> Content** tab -> **Certificates**.

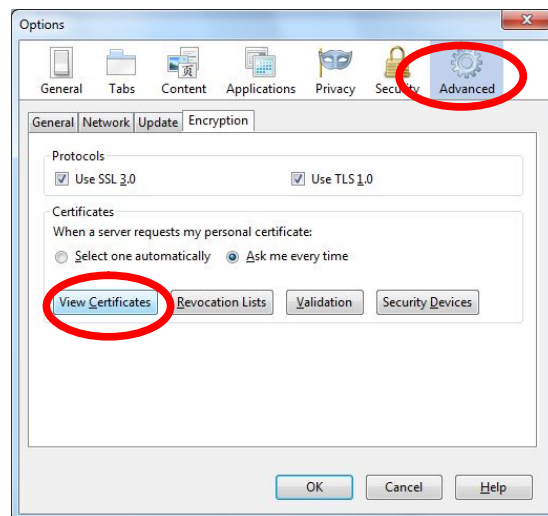
The CA certificate called *Trustis FPS Root CA* should be installed in the **Trusted Root Certification Authorities** tab, and the Issuing Authority certificate called *Chamber SimplySign TT Issuing Authority* should be installed in the **Intermediate Certification Authorities** tab.

IV. CA Chain Installation with Firefox

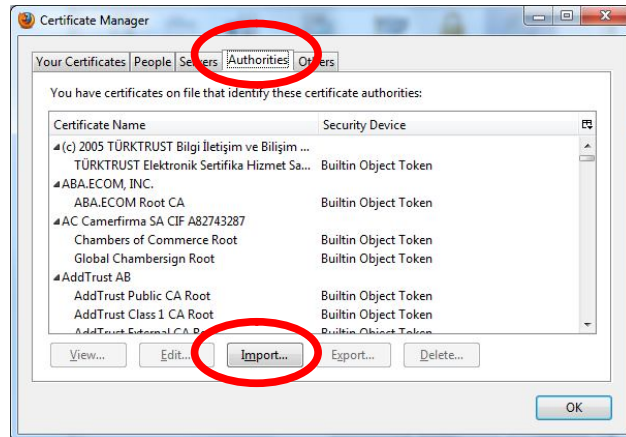
1. To obtain the CA Chain file, please browse to <http://www.simplysign.co.uk/downloads/cachain.p7b> and save the file somewhere convenient, such as on your PC desktop.
2. Open Firefox. Click on **Tools** and choose **Options**.



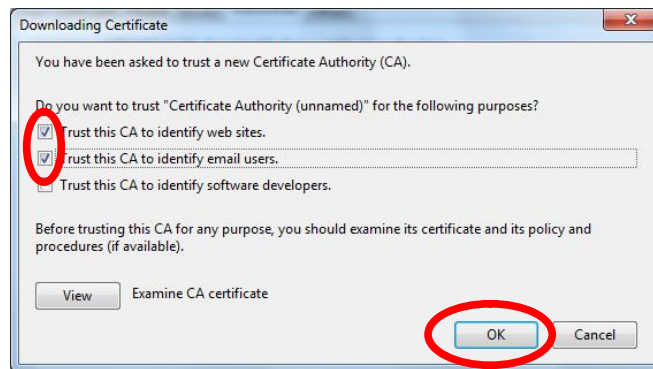
3. Click on the **Advanced** icon, and then click **View Certificates**



4. Click on the **Authorities** tab and click **Import**



5. Find and open the file **cachain.p7b**, then tick the boxes **Trust this CA to identify web sites** and **Trust this CA to identify email users**. Then click OK



6. The certificates have been added. Click **OK** to close the Certificate Manager window and to close the Options window.